



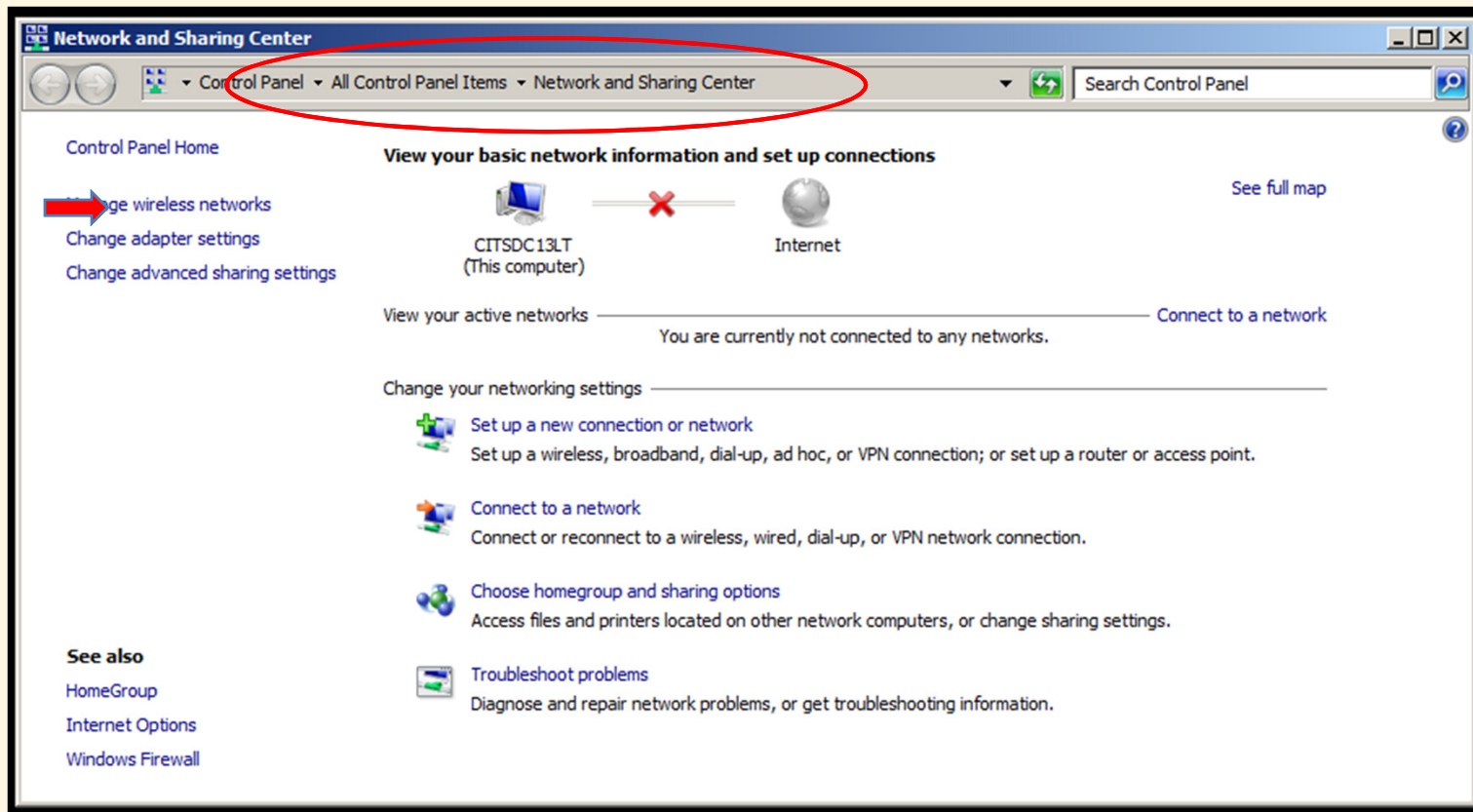
Wireless Setup

Win7

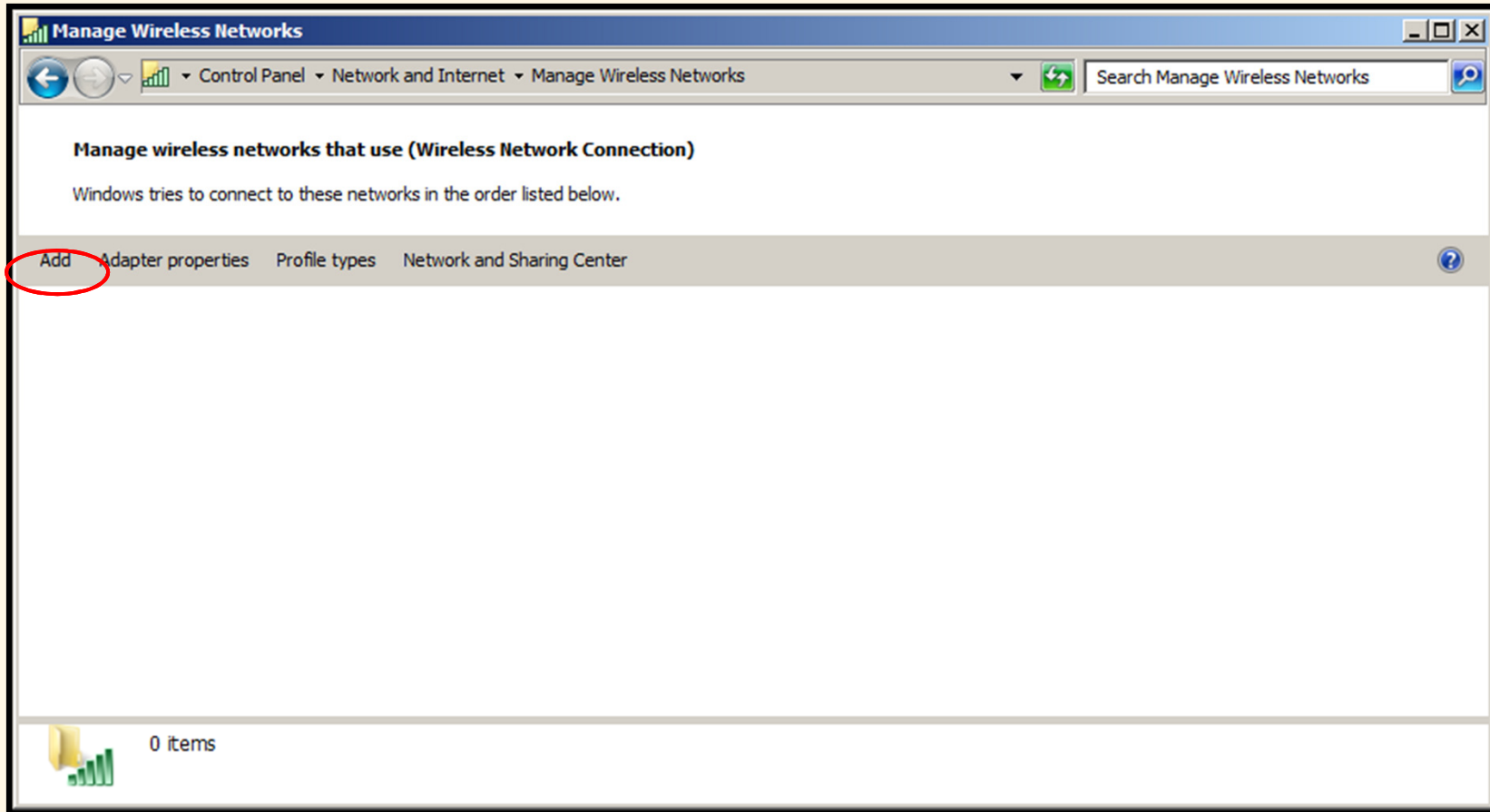
Go to:

Start > Control Panel > Network and Sharing Center

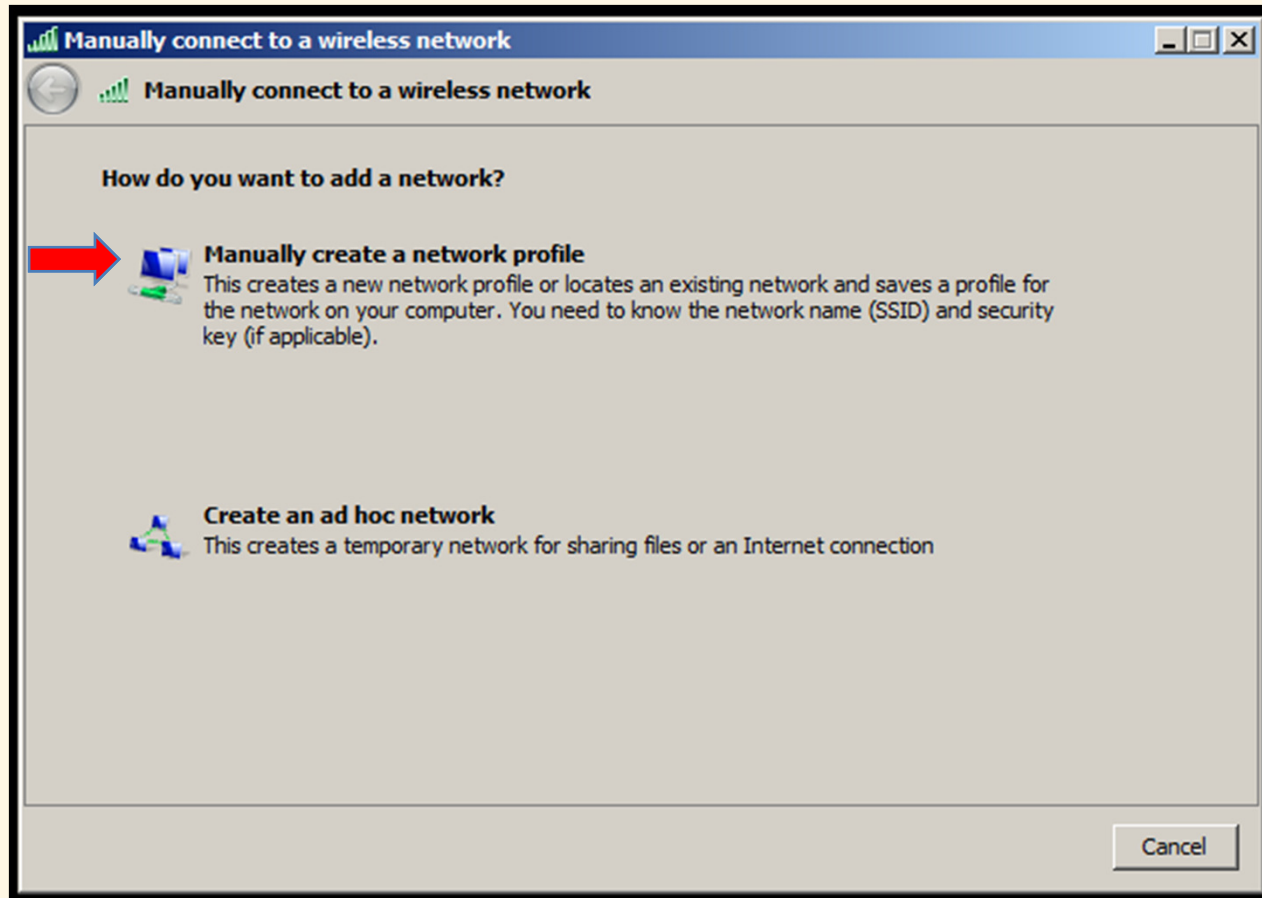
Select: **Manage wireless networks**



Select Add



Select **Manually create a network profile**



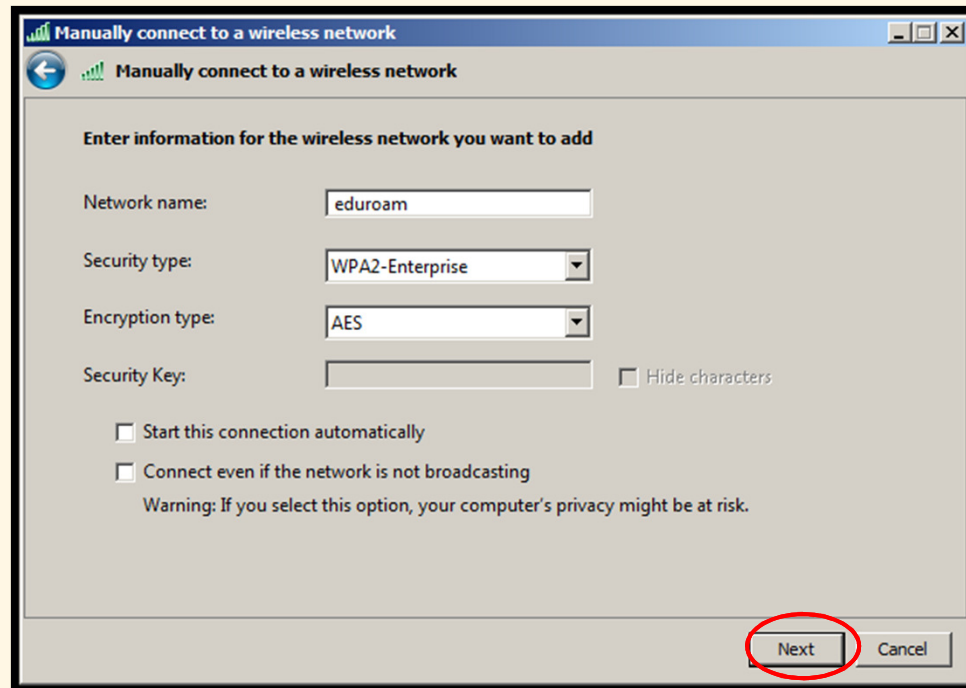
Network Name: **eduroam** SSID (Case Sensitive)

Security Type: **WPA2-Enterprise**

Encryption type: **AES**

Un-check the box for ***Start this connection automatically***

Select **Next**



Manually connect to a wireless network

Enter information for the wireless network you want to add

Network name: eduroam

Security type: WPA2-Enterprise

Encryption type: AES

Security Key: Hide characters

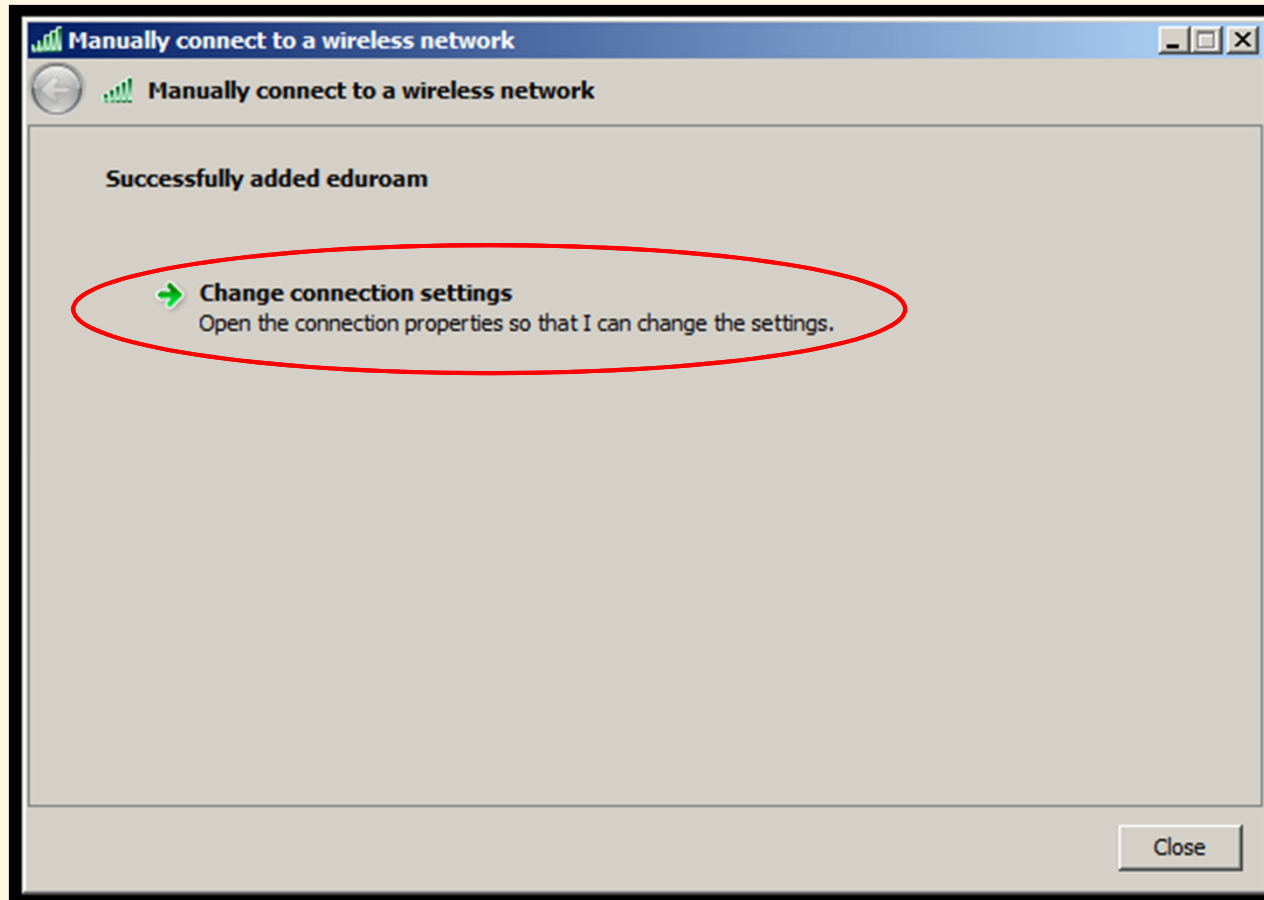
Start this connection automatically

Connect even if the network is not broadcasting

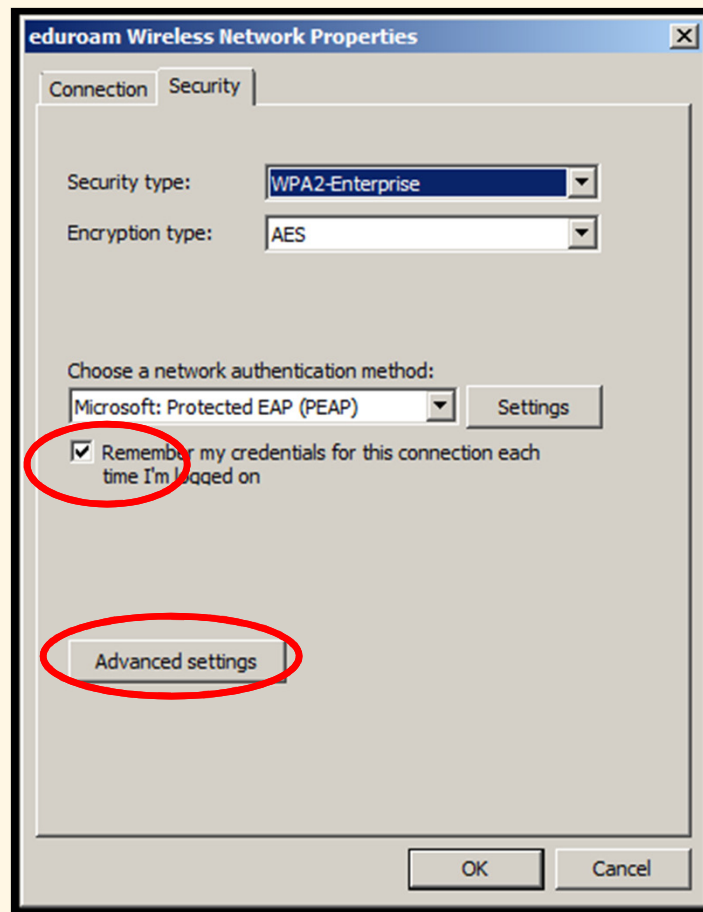
Warning: If you select this option, your computer's privacy might be at risk.

Next Cancel

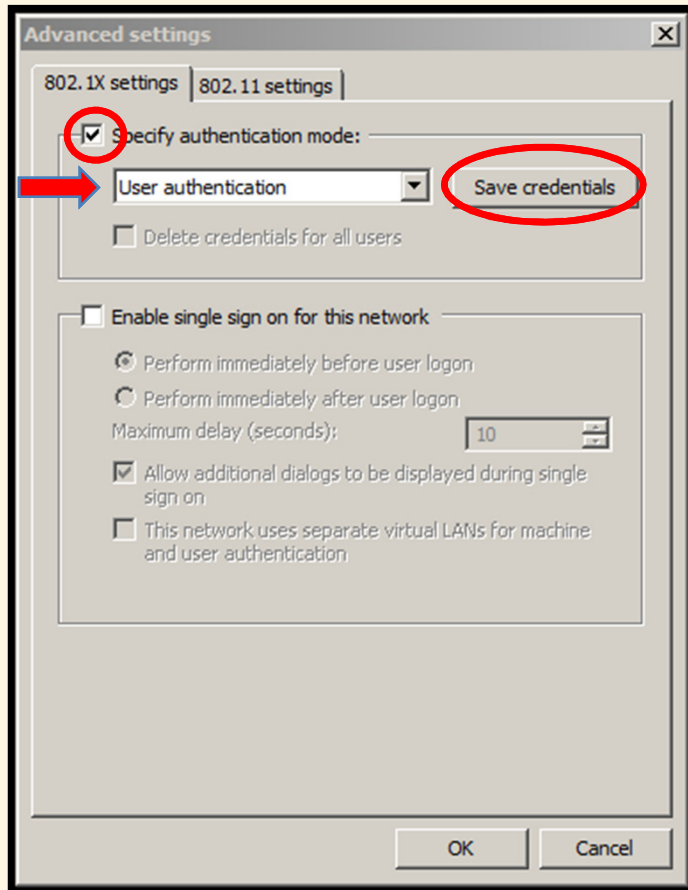
Select **Change connection settings**



Check “Remember my credentials for this connection each time I’m logged on”
Select Advanced Settings



Check "Specify authentication mode:"
Drop down window select: User authentication
Click Save Credentials (Pop-Up Window Appears)

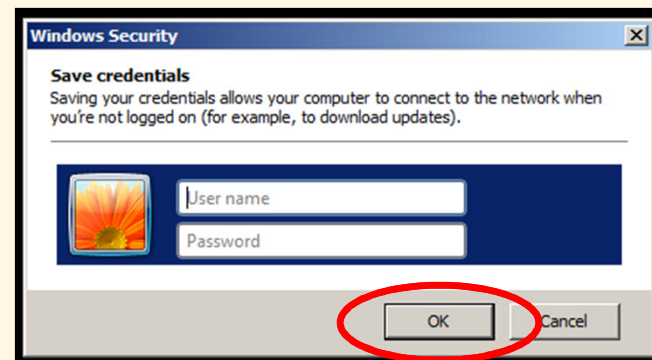


- Username is your UMID@eduroam.umaryland.edu

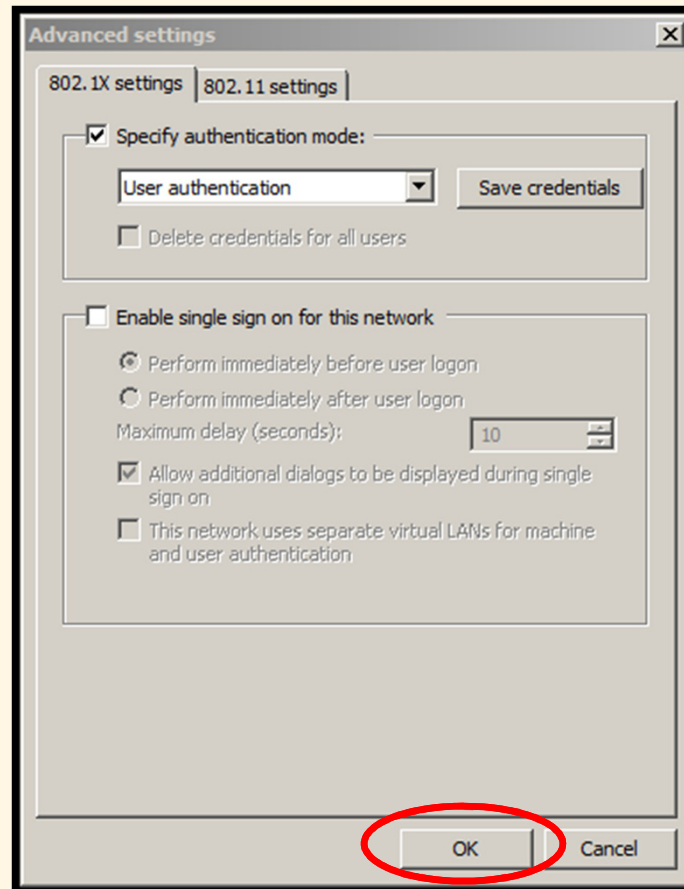
For Example:

jdoe@eduroam.umaryland.edu

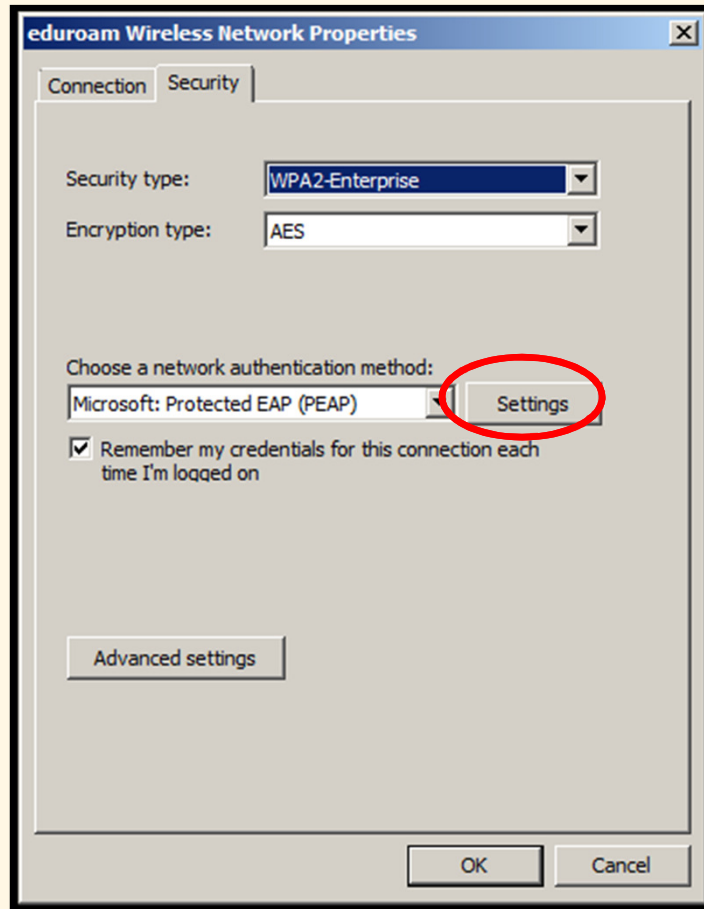
- Enter your UMID Password
- Select OK



Click "OK" button

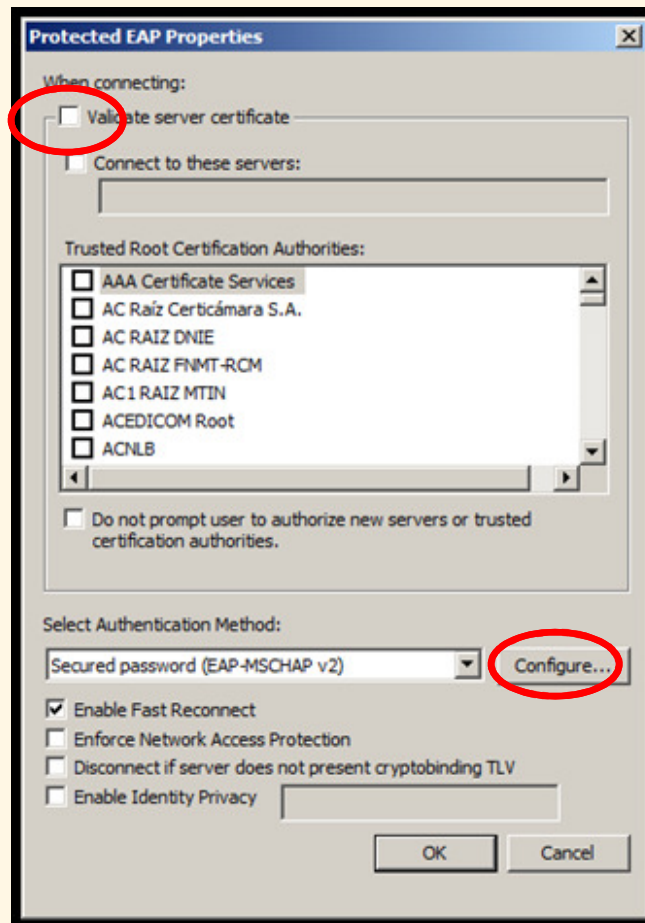


Next to “Microsoft: Protected EAP (PEAP)” select **Settings**



Uncheck Validate Server Certificate

Next to “Secured password (EAP-MSCHAPv2)” select **Configure...**

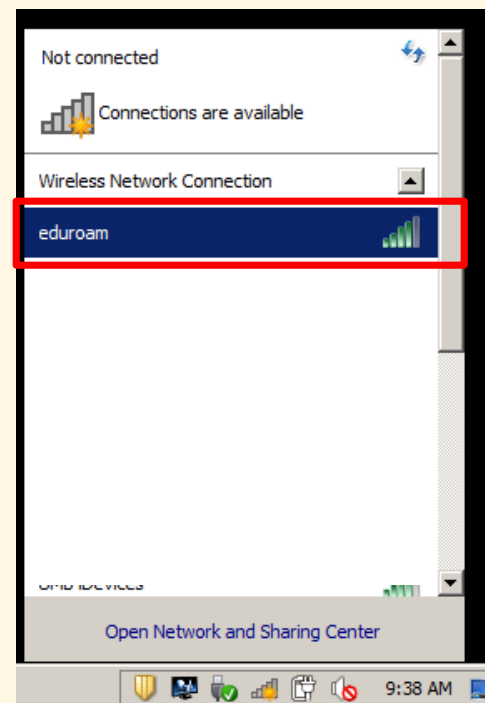


Un-check Selection Box and Select **OK**



- In the “Protected EAP Properties” dialog box, click OK.
- In the “eduroam Wireless Network Properties” dialog box, click OK.
- In the “Manually connect to a wireless network” dialog box, click OK.
- Close the “Manage wireless networks that use (Wireless Network Connection)” dialog box.

On the Taskbar, click on the Network icon
In the dialog box, select eduroam
Click the Connect button

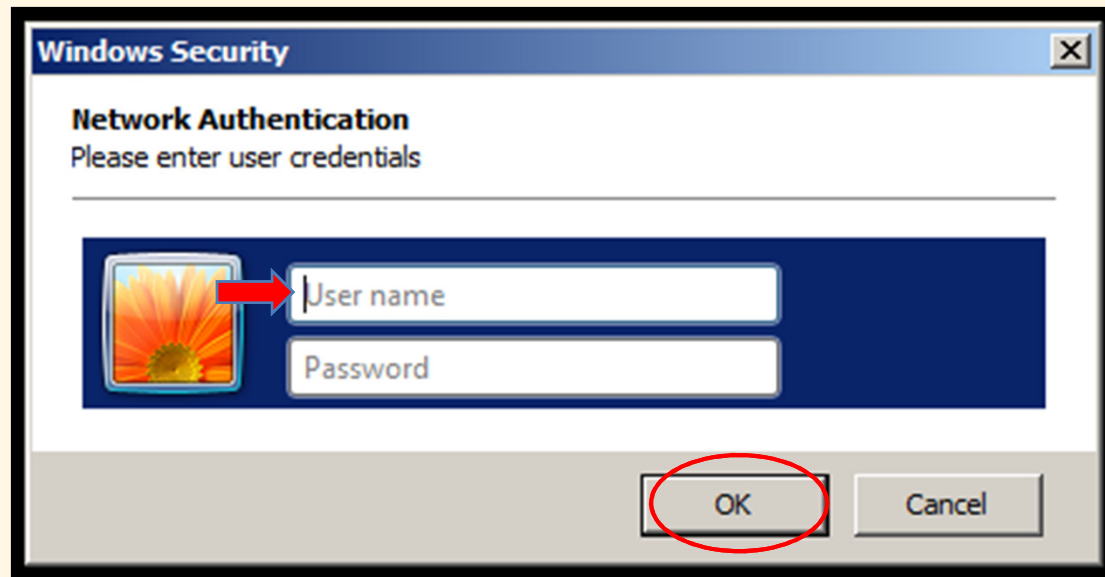


Login using your UMID@eduroam.umaryland.edu

For Example:

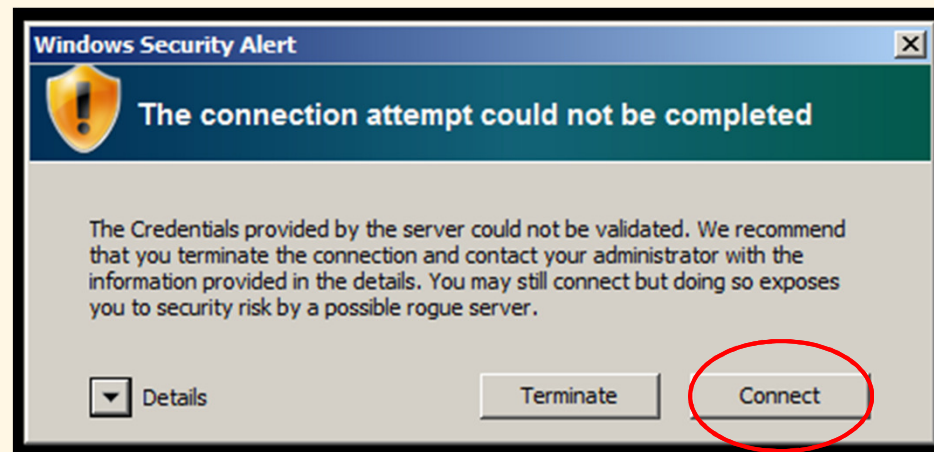
jdoe@eduroam.umaryland.edu

Select **OK**



Note

If you do not uncheck Validate Server Certificate in step 7 you may receive a Windows Security Alert. Select Connect



University of Maryland – the Founding Campus

To Get Help, Contact:

CITS IT Help Desk

Email: help@umaryland.edu
Phone: 410-706-HELP(4357)
Fax: 410-706-4191
Address: 601 W. Lombard Street, Baltimore, MD 21201
Room: 5th Floor, Suite 540

Hours

Mon-Fri 8:00 am – 5:00 pm
Sat-Sun 8:00 am – 5:00 pm (Phone and E-Mail Only)